

# ITEM DESCRIPTION

① SD - ② 050 - 0100 - 048 - ③ D25.4 - ④ E20 - 0.75KW - ⑤ 3N400 - C2 - B2 - ⑥ FI

### OUTPUT SHAFT

<b>D25.0</b>	Ø25.0 mm
<b>D25.4</b>	Ø25.4 mm
<b>D30.0</b>	Ø30.0 mm
<b>D31.75</b>	Ø31.75 mm
<b>D40.0</b>	Ø40.0 mm
<b>D55.0</b>	Ø55.0 mm

### OUTPUT SPEED

<b>010</b>	10 rpm
<b>015</b>	15 rpm
<b>024</b>	24 rpm
<b>048</b>	48 rpm
<b>140</b>	140 rpm

### OUTPUT TORQUE

<b>0060</b>	60 Nm
<b>0080</b>	80 Nm
<b>0100</b>	100 Nm
<b>0120</b>	120 Nm

### BODY SIZE

<b>050</b>	50 TYPE BODY
<b>063</b>	63 TYPE BODY
<b>085</b>	85 TYPE BODY
<b>110</b>	110 TYPE BODY

### LIMIT SWITCH

<b>E15</b>	ELECTRONIC LIMIT SWITCH
<b>E20</b>	ELECTRONIC LIMIT SWITCH
<b>M15</b>	MECHANIC LIMIT SWITCH
<b>M20</b>	MECHANIC LIMIT SWITCH

### EXTRA FEATURE

<b>FI</b>	FREQUENCY INVERTER
<b>HD</b>	REFRIGERATED BODY

### BRAKE

<b>B0</b>	NON BRAKE
<b>B1</b>	5 Nm BRAKE
<b>B2</b>	10 Nm BRAKE
<b>B3</b>	20 Nm BRAKE
<b>R1</b>	5 Nm FRONT BRAKE
<b>R2</b>	10 Nm FRONT BRAKE

### EMERGENCY OPERATION

<b>C1</b>	HAND CHAIN OPERATOR C1
<b>C2</b>	HAND CHAIN OPERATOR C2
<b>C3</b>	HAND CHAIN OPERATOR C3
<b>MK</b>	HAND CRANK
<b>RK</b>	RELEASE CRANK

### OPERATING VOLTAGE

<b>1N230</b>	1N~230 V
<b>3N400</b>	3N~400 V

### PRODUCT GROUP

<b>SD</b>	SECTIONAL DOOR DRIVES
<b>DS</b>	NON BALANCED SECTIONAL DOOR DRIVES
<b>RD</b>	ROLLER SHUTTER DOOR DRIVES
<b>PS</b>	HIGH SPEED DOOR DRIVES
<b>KD</b>	CHAIN DRIVE DOOR DRIVES

### MOTOR POWER



<b>0.37KW</b>	0,37 kW MOTOR
<b>0.55KW</b>	0,55 kW MOTOR
<b>0.75KW</b>	0,75 kW MOTOR
<b>1.10KW</b>	1,10 kW MOTOR
<b>1.50KW</b>	1,50 kW MOTOR
<b>2.20KW</b>	2,20 kW MOTOR
<b>3.00KW</b>	3,00 kW MOTOR

## ITEM DESCRIPTION

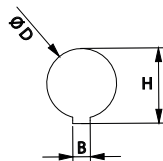
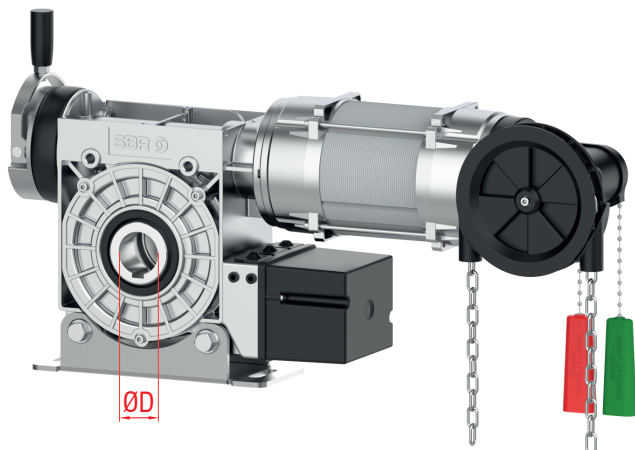
### 1-PRODUCT GROUP

		Output Torque (Nm)	Output Speed (rpm)
<b>SD</b>	SECTIONAL DOOR DRIVES	80-140	15-80
<b>DS</b>	NON BALANCED SECTIONAL DOOR DRIVES	140-1000	15-24
<b>RD</b>	ROLLER SHUTTER DOOR DRIVES	130-1800	10-15
<b>PS</b>	HIGH SPEED PVC DOOR DRIVES	40-250	35-140
<b>KD</b>	CHAIN DRIVE DOOR DRIVES	100-1000	24

### 2- BODY SIZE

<b>50</b>	GEARBOX 50	
<b>63</b>	GEARBOX 63	
<b>85</b>	GEARBOX 85	
<b>110</b>	GEARBOX 110	


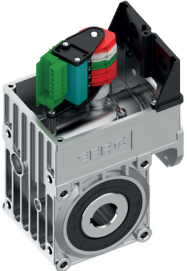
### 3- OUTPUT SHAFT







ØD	H	B
<b>D25.0</b>	28,3	8,00
<b>D25.4</b>	28,4	6,35
<b>D30.0</b>	33,3	8,00
<b>D31.75</b>	34,7	6,35
<b>D40.0</b>	43,3	12,00
<b>D55.0</b>	64,4	16,00

## ITEM DESCRIPTION

### 4- LIMIT SWITCH

<p><b>E15</b> <b>E20</b></p>	<p>ELECTRONIC LIMIT SWITCH</p>	
<p><b>M15</b> <b>M20</b></p>	<p>MECHANIC LIMIT SWITCH</p>	

### 5-EMERGENCY OPERATION

<p><b>C1</b></p>	<p>C1 RAPID HAND CHAIN OPERATOR</p>	
<p><b>C2</b></p>	<p>C2 HAND CHAIN OPERATOR</p>	
<p><b>C3</b></p>	<p>C3 HAND CHAIN OPERATOR</p>	
<p><b>MK</b></p>	<p>HAND CRANK</p>	
<p><b>RK</b></p>	<p>RELEASE CRANK</p>	